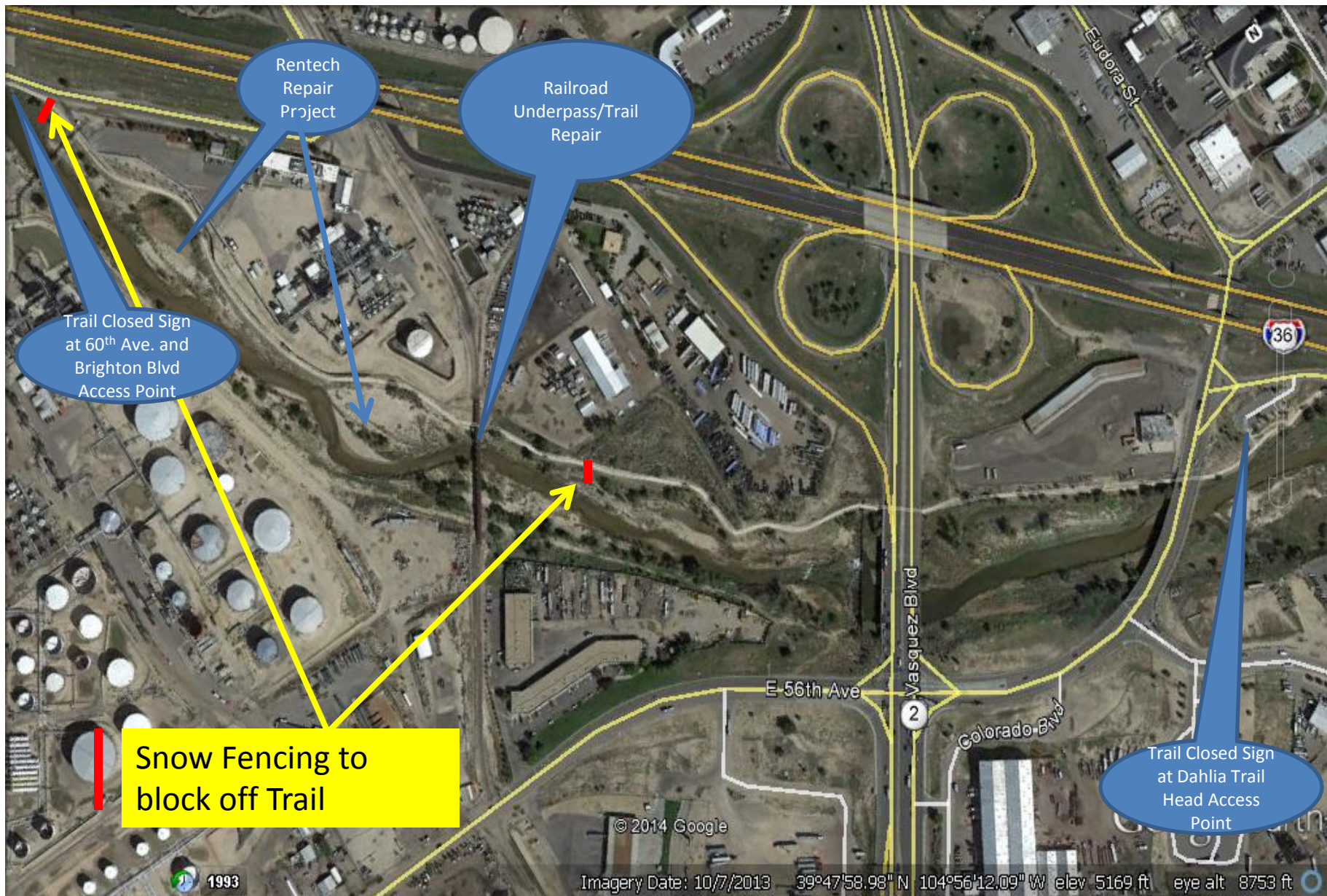


# Sand Creek Flood Damage Repairs



Rentech  
Repair  
Project

Railroad  
Underpass/Trail  
Repair

Trail Closed Sign  
at 60<sup>th</sup> Ave. and  
Brighton Blvd  
Access Point

Snow Fencing to  
block off Trail

Trail Closed Sign  
at Dahlia Trail  
Head Access  
Point

© 2014 Google

Imagery Date: 10/7/2013 39°47'58.98" N 104°56'12.09" W elev 5169 ft eye alt 8753 ft